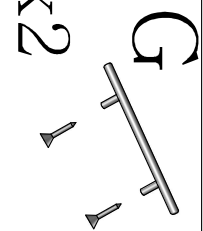


A



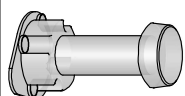
x8



x2

LA

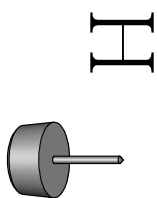
x4



B



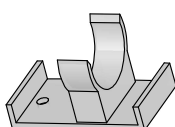
x8



H

LB

x2



C



x30  
20mm

I



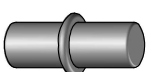
x20  
16mm

D



x8

J



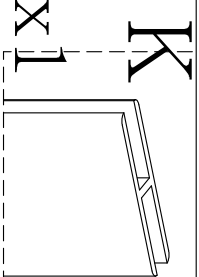
x4

E



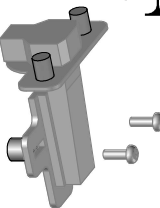
x4  
30mm

K



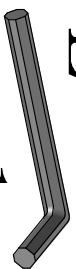
x1

F



x4

L



x1

Montážny návod



1/1

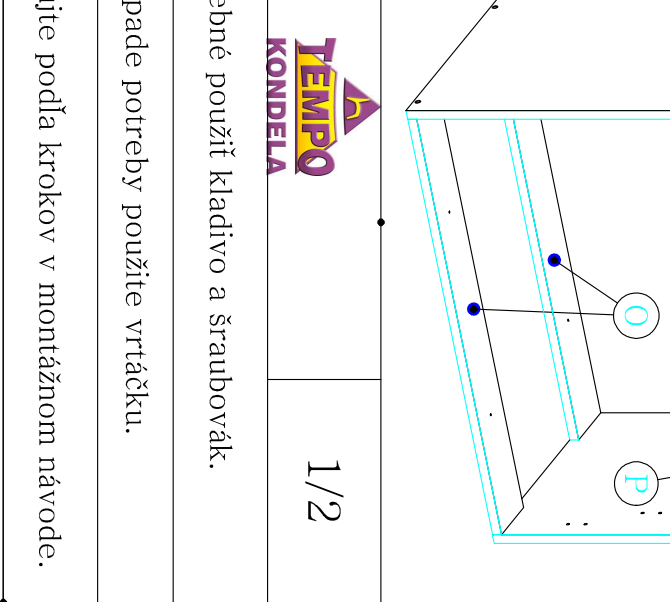
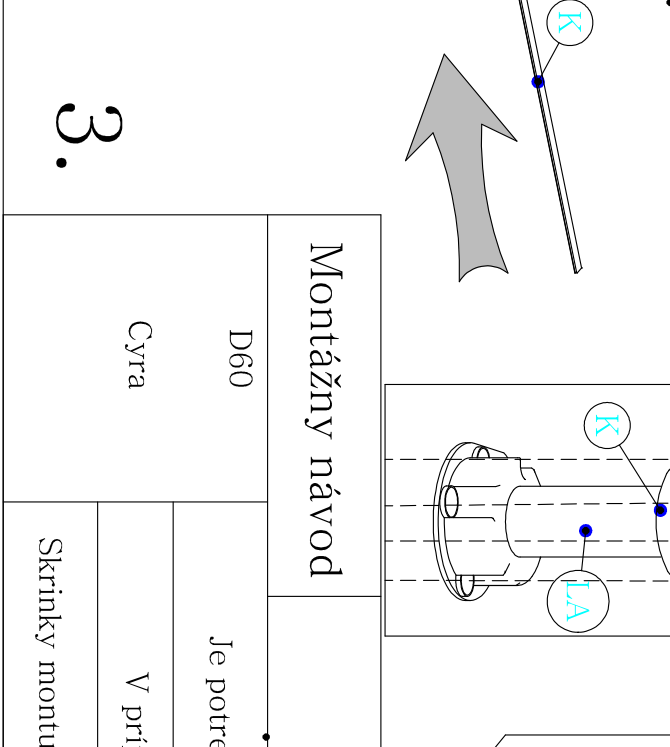
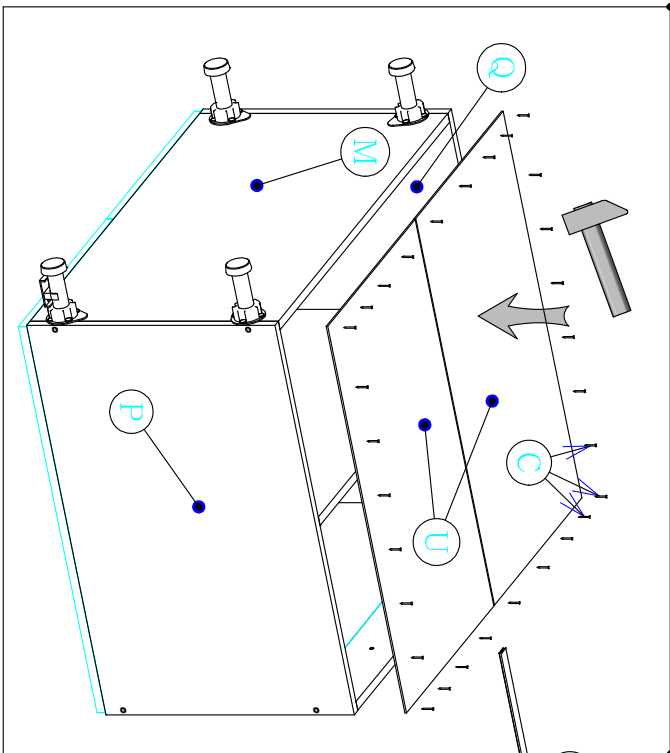
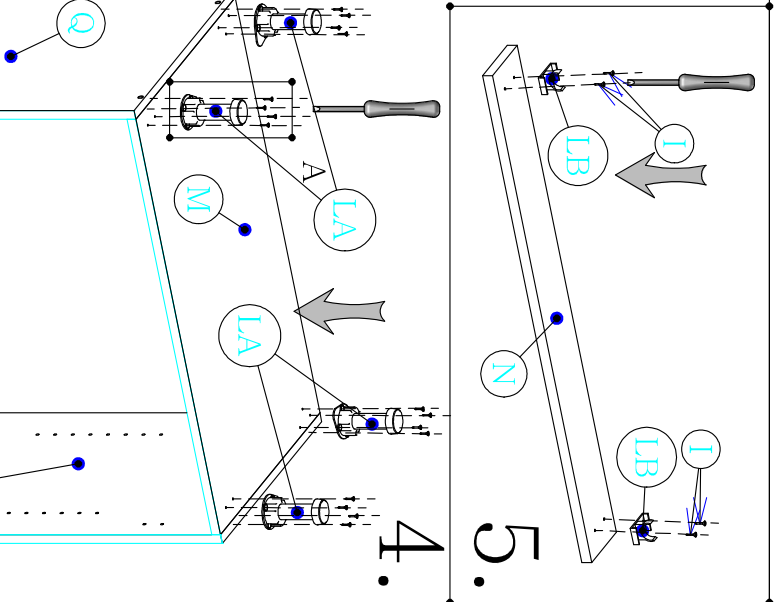
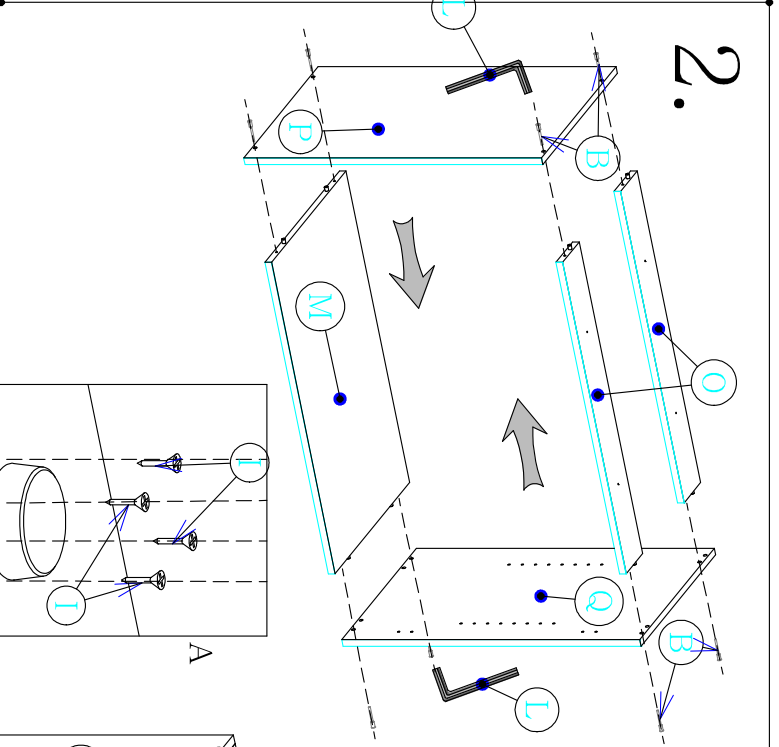
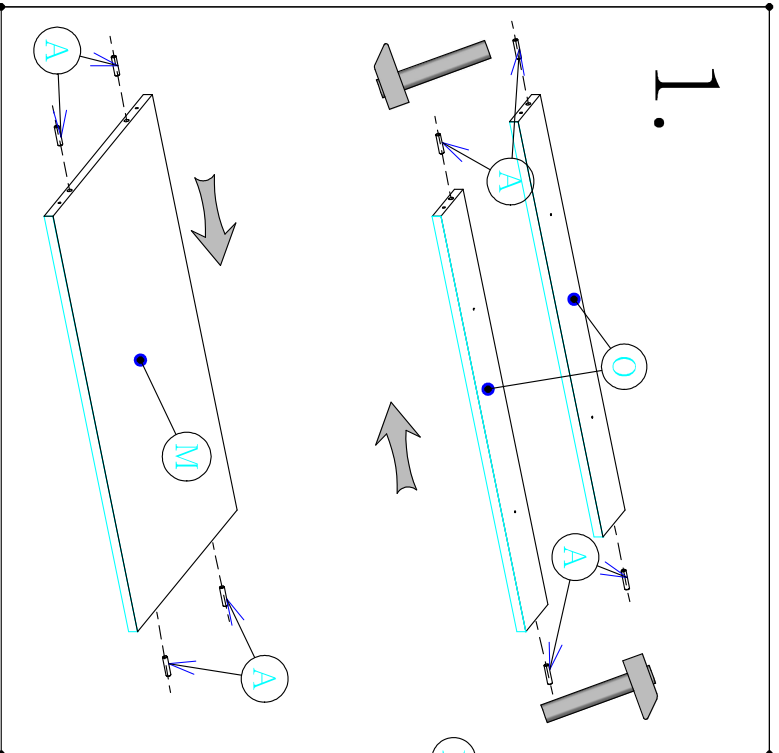
Je potrebné použiť kladivo a šraubovák.

V prípade potreby použite vrtáčku.

D60\_

Cyra

Skrinky montujte podľa krokov v montážnom návode.



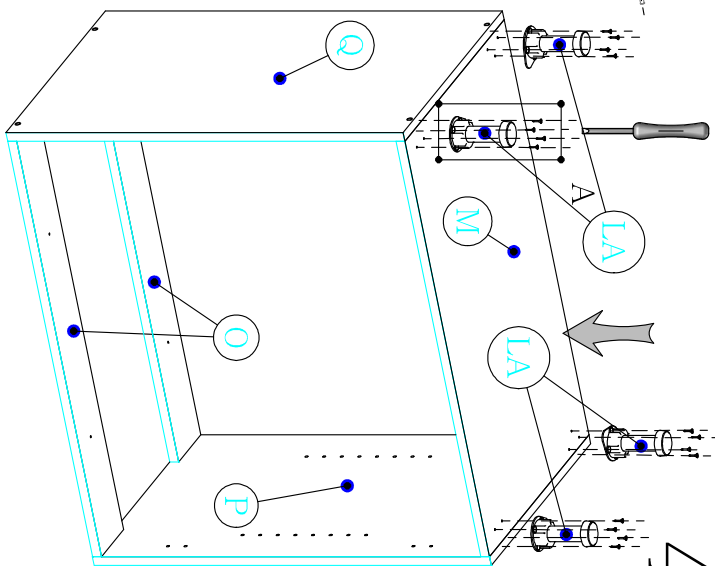
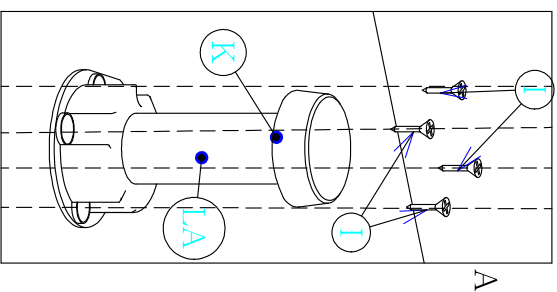
1.

2.

3.

4.

5.



Montážny návod

D60

Cytra

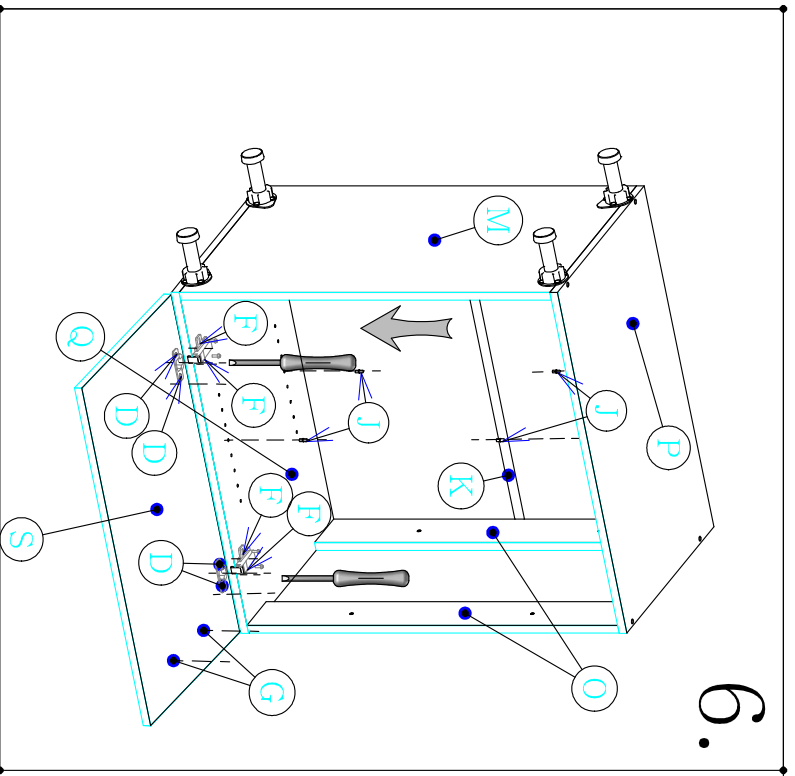


1/2

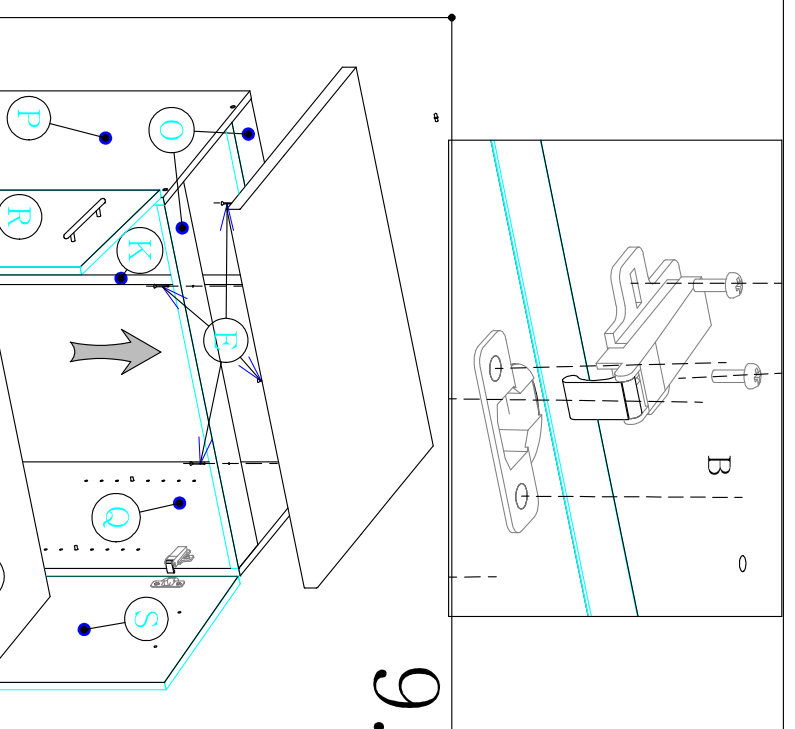
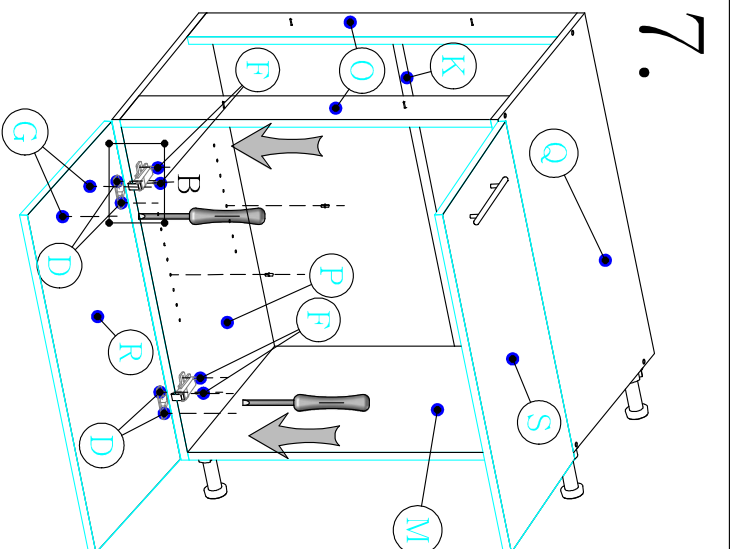
Je potrebné použiť kladivo a šraubovák.

V prípade potreby použite vrtáčku.

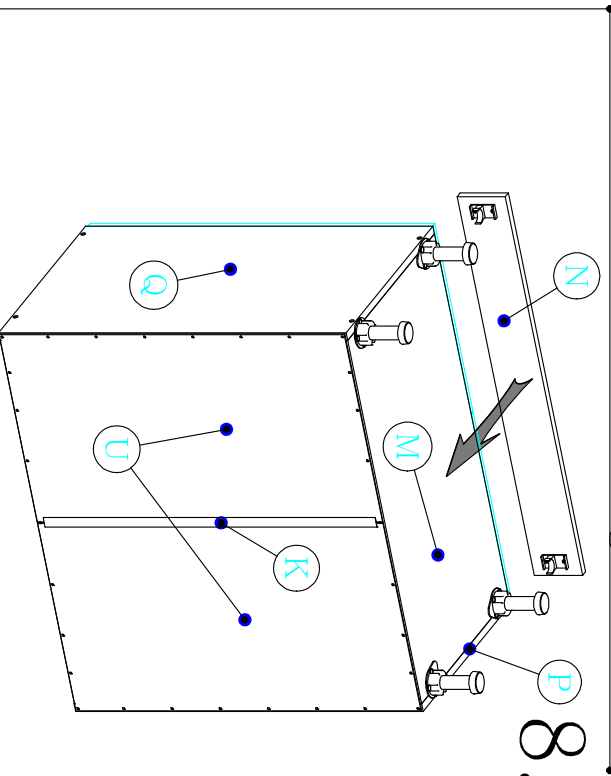
Skrinky montujte podľa krokov v montážnom návode.



6.7.



9.



8.

### Montážny návod

D60

Cyra



2/2

Je potrebné použiť kladivo a šraubovák.

V prípade potreby použite vrtáčku.

Skrinky montujte podľa krokov v montážnom návode.